

OTC D750

TROUBLESHOOTING STEP BY STEP,
WIRELESS DIAGNOSTIC SYSTEM



OTC D750 GENISYS TOUCH

MORE THAN A TOOL – IT IS A PARTNER

THE OTC D750 GENISYS TOUCH SYSTEM CONSISTS OF A TOUCH-SCREEN TABLET UTILIZING A 10 INCH SCREEN, CONNECTING TO A WIRELESS EURO 5/J2534/PDU/API COMPLIANT VEHICLE INTERFACE MODULE (VCI).

Focus for the development has been ease of use and increasing productivity, by employing automatic VIN detection and vehicle selection, global scan tests and tailor-made troubleshooting instructions paired with built-in service schedules, shortcuts to service functions based on OEM information. All this information presented in a new style intuitive user interface. The OTC D750 Genisys Touch system will become a trusted partner to diagnose and service vehicles in the aftermarket and dealerships that are looking to expand into multibrand repairs.



FEATURES

- Automatic vehicle selection
- Service information based on OEM data
- Maintenance Information
- Known Fixes/Technical bulletins
- Automatic updates through the Internet connection (Wi-Fi or Ethernet)

TOP LEVEL CONNECTIVITY

- Operating system: Windows 7
- Wireless communication for the VCI
- J2534 and Euro 5 compliant

A TOOL THAT MAKES YOUR JOB EASIER

- Wide Touch-screen 10.1"

DIAGNOSTICS

D750



UNMATCHED

DIAGNOSTIC SYSTEM

OTC D750 GENISYS TOUCH IS A GLOBAL DIAGNOSTIC SOLUTION PROVIDING, BY TABLET AND WIRELESS VCI IN A WINDOWS BASED ENVIRONMENT, THE FULL "HANDHELD" SCAN TOOL EXPERIENCE AS WELL AS FULL MOBILITY.

ALL MAKES COVERAGE KIT:

- Software coverage of European and Asian vehicles
- Pull-apart, durable case for easy storage

RUGGEDIZED PC TABLET:

- With included J2534 Vehicle Communication Interface
- Industry leading 10.1" resistive, high resolution touch-screen display, Windows 7 operating system, Internet browser, USB and video-out connectivity

VEHICLE AUTOID™:

- Automatically identifies CAN vehicles to quickly set up year, make, model and engine — all in one touch
- Manual entry is simple and fast

WI-FI & WEB SERVICES:

- Wi-Fi allows immediate software updates, including new releases of vehicle coverage
- Fast link within application to OEM websites and more
- Search the Internet within live sessions for repair info, part numbers and fixes

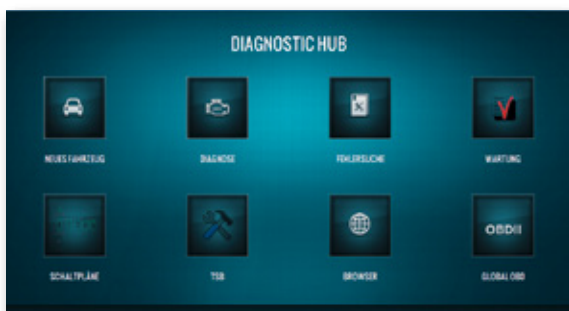
MORE FEATURES:

- Ruggedized OEM-Level Diagnostics PC Tablet with included J2534 communication device
- A Technician well informed, well equipped, well armed
- Introducing an unmatched repair suite



EASE OF USE

FOCUS ON: EASE OF USE AND INCREASING PRODUCTIVITY



Diagnostic HUB start screen, all info on one screen



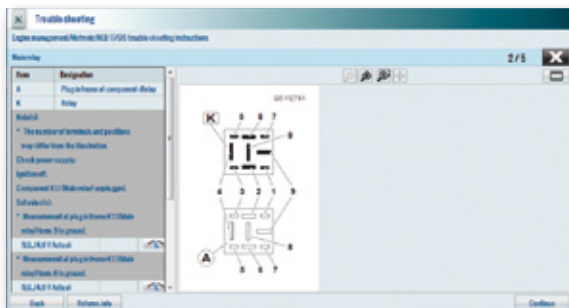
Wide vehicle and system coverage, activations and adaptations



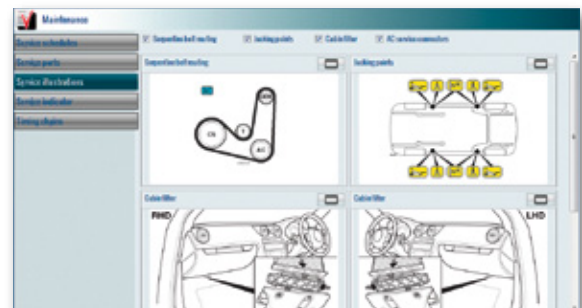
Wiring diagrams with zoom and pan capabilities for optimal touch-screen use



Datastream – numbers or graphical for analysis of data values. Pause and replay capabilities.



Component test values supports troubleshooting on vehicle components



Service module with parts and intervals as well as timing replacement and pictures of service points

- AUTOMATIC VIN DETECTION AND VEHICLE SELECTION
- GLOBAL SCAN TESTS AND TAILOR-MADE TROUBLESHOOTING INSTRUCTIONS
- ALL INFORMATION PRESENTED IN A NEW STYLE INTUITIVE USER INTERFACE

TECHNICAL SPECIFICATIONS

D750 – TABLET

PC specifications	Intel Atom N2600 1.6GHz, Dual Core with Hyper threading
Mass storage	320GB HDD, industry standard 2.5" SATA
Memory	2 GB DDR3
Touch-screen	Colour TFT 1024 x 600
Communication	Wireless LAN IEEE802.11 b/g/n Wi-Fi with diversity antennas
Bluetooth	Power Class 1
Ports	<ul style="list-style-type: none"> • Secure Digital: 1 SD socket for memory card • External VGA monitor • Ethernet LAN • USB2.0 High Speed • 2 Speakers, Stereo headphone jack
Power supply	10 V to 20 V DC, less than 60 W
Battery	4 Cell Lithium Ion. 2.5 to 3 hours run time
Dimension	361 x 222 x 49 mm
Weight	2.1 kg
Ambient temperature range	Operating: 0 °C – 40 °C Storage, no battery: -20 °C – +60 °C
Relative Humidity	Operating: 10 % – 85 % Storage, no battery: 10 % – 85 %
Ingress	IP40
Drop	1 m
Chemical	Resistant to chemicals commonly found in the vehicle workshop

VCI – VEHICLE COMMUNICATION INTERFACE

Standards	<ul style="list-style-type: none"> • J-2534-1, and -2 (Euro5) • ISO 22900 Hardware Capable (PDU-API) • All current and legacy EMEA OE Diagnostics Protocols Supported
Features	<ul style="list-style-type: none"> • Low voltage threshold – no reboot during cranking • Volt Range: 7 – 30 V • 26 Pin Connector
Information LED's	<ul style="list-style-type: none"> • Power – vehicle or AC • PC Connection • Vehicle Communication
Bluetooth	Power Class 1
Power supply	AC Adapter – for re-flashing the VCI
Ports	USB 2.0 High Speed
Dimension	175 x 150 x 45 mm
Weight	0.5 kg

YOUR LOCAL OTC DEALER:

FOR FURTHER INFORMATION ON OTC PRODUCTS PLEASE CONTACT YOUR LOCAL WHOLESALE.